

*2024 Regional Events
Johnson City
Paris Landing
Fall Creek Falls*



**RURAL
HEALTH**
ASSOCIATION OF TENNESSEE

Rural Health Association of Tennessee



~800 Members

- School Health
- Hospitals and Clinics
- Mental and Behavioral Health providers
- Community Based Organizations

Mission

Lead the way to a health tomorrow throughout rural Tennessee



Partnerships



Education



Advocacy



Resources

Vision

To become among the healthiest states in America.

Today's Agenda

- 9:00 Welcome
- 9:30 Current Drug Trends, TBI
- 10:30 Substance Use and Behavioral Health Disorders in Rural Appalachia
- Addressing Social Drivers with findhelp
- 12:20 Lunch
- 1:00pm TDH and RHA Programs
- 2:00pm Naloxone Training



**RURAL
HEALTH**
ASSOCIATION
OF TENNESSEE

By proactively involving our members, partner organizations, and policymakers, we identify rural health concerns and work to resolve those issues through service, education, and advocacy.

**RURAL
HEALTH**
ASSOCIATION OF TENNESSEE

What are your goals for today?

- Goal 1?
- Goal 2?



Introductions



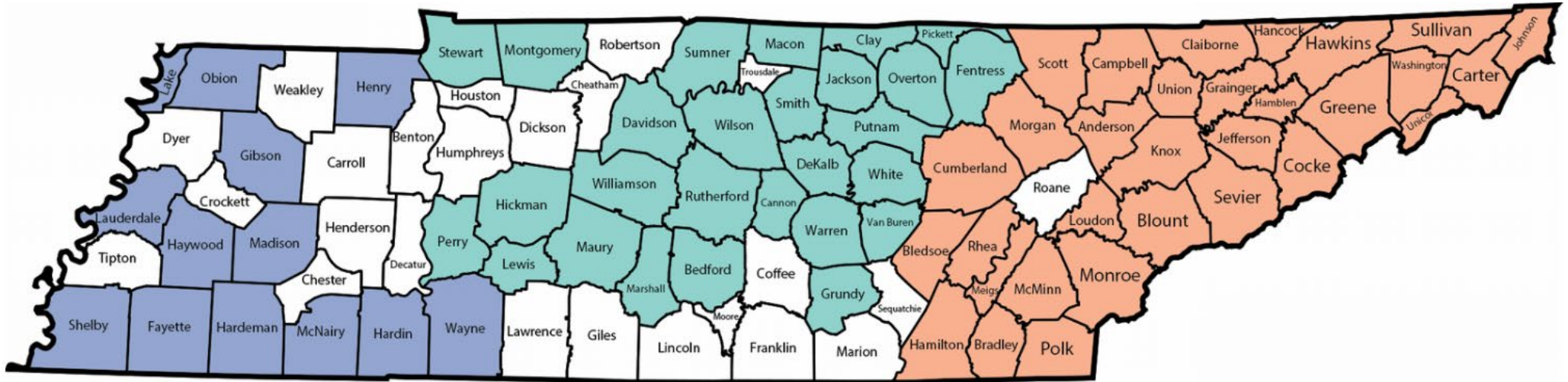
What are your community's biggest....

- Access to primary care
- Mental health care
- Behavioral health
- Non-clinical services

challenges?

TN Community Health Centers

TN Community Health Centers serve more than 423,000 patients in 72 TN counties.



If you are seeking quality, affordable and accessible healthcare, [click here to find a community health center near you!](#)

Tennessee Rural Healthcare Facilities

16

Critical Access
Hospitals



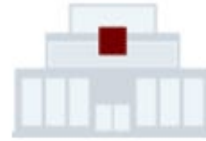
273

Rural Health
Clinics



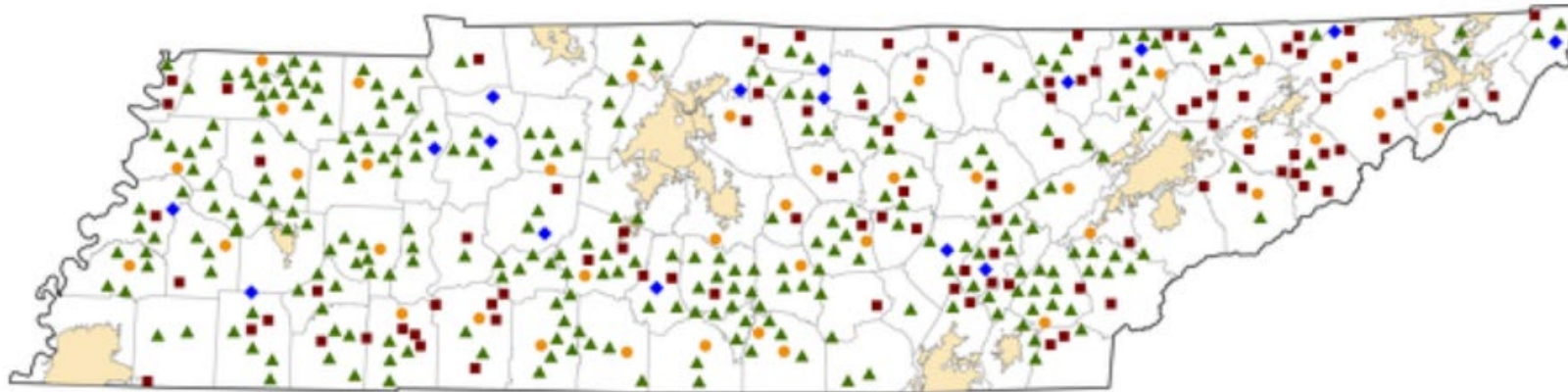
99

Federally Qualified
Health Centers*



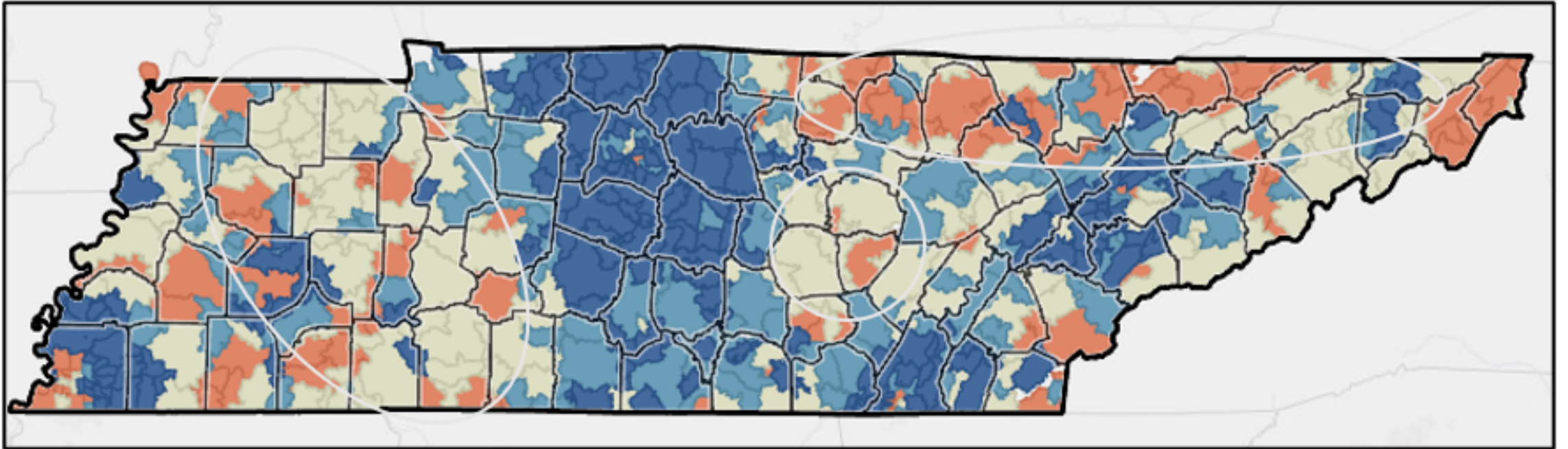
40

Short Term/PPS
Hospitals*



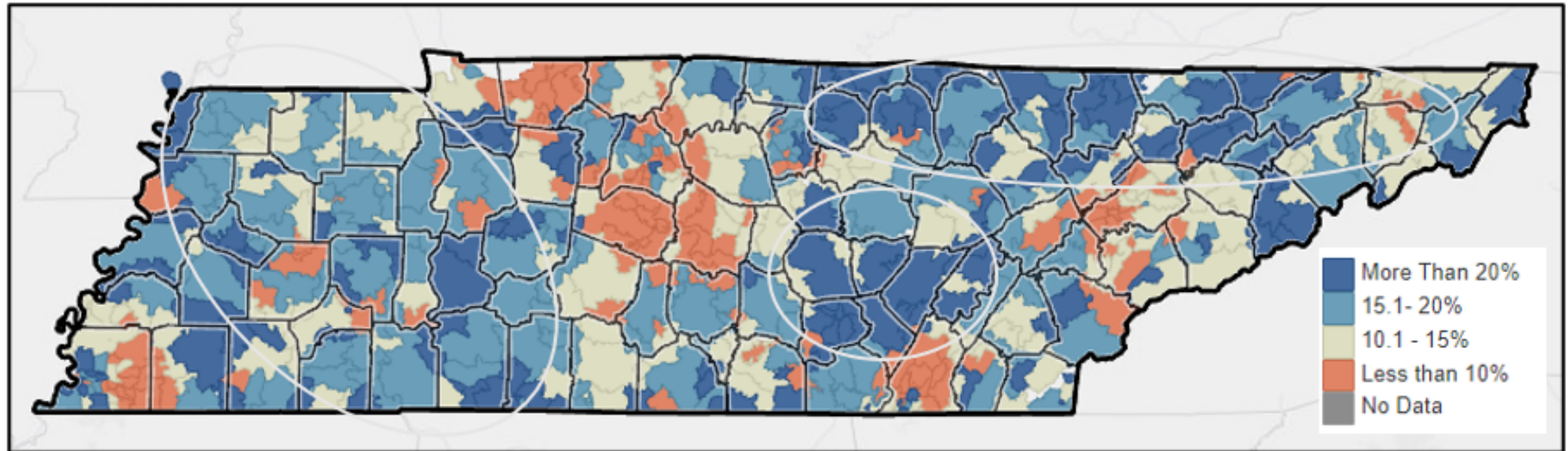
*Sites according to data.HRSA.gov (October 2023), showing only locations outside of [U.S Census Bureau](https://www.census.gov/urban-areas) Urban Areas with a population of 50,000 or more

Household Income by ZIP Code, CHR 2019



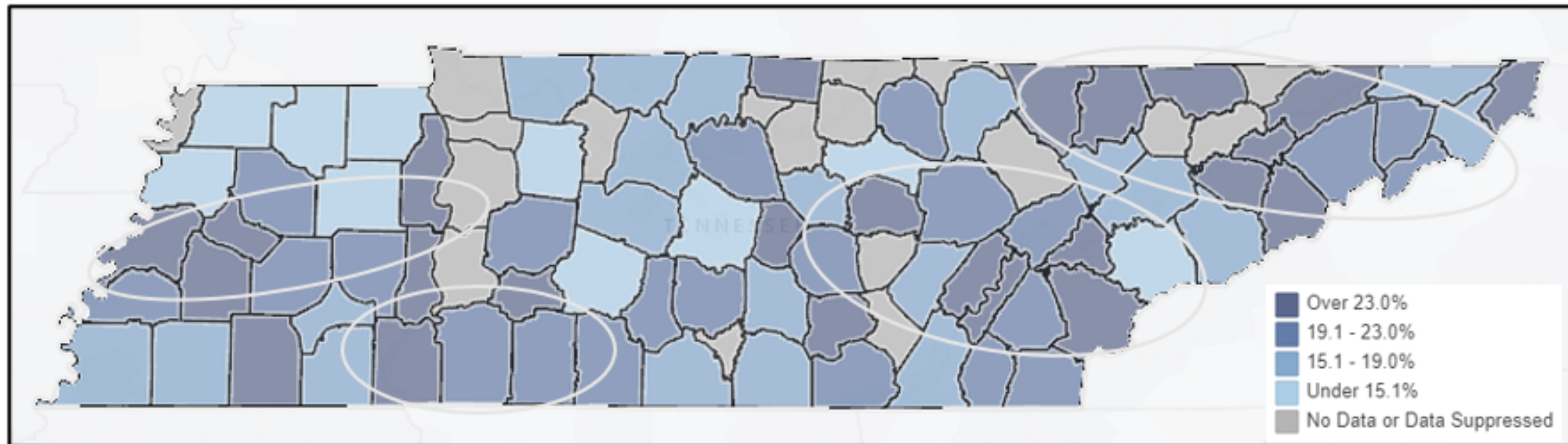
Orange and green areas of this visual represent ZIP codes with a lower household income.

% Age 25+ With Less than a High School Education by ZIP Code, 2019



Blue areas on this visual represent ZIP codes with a higher percentage of population age 25+ without a high school education.

Inadequate Social/Emotional Support, % of Adults Age 18+ by County, CDC BRFSS 2006-12



A higher percentage indicates an increased lack of social or emotional supports available within the community.

Access to Food

Low Access to Healthy Food, 2019 - Tennessee

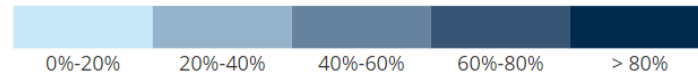
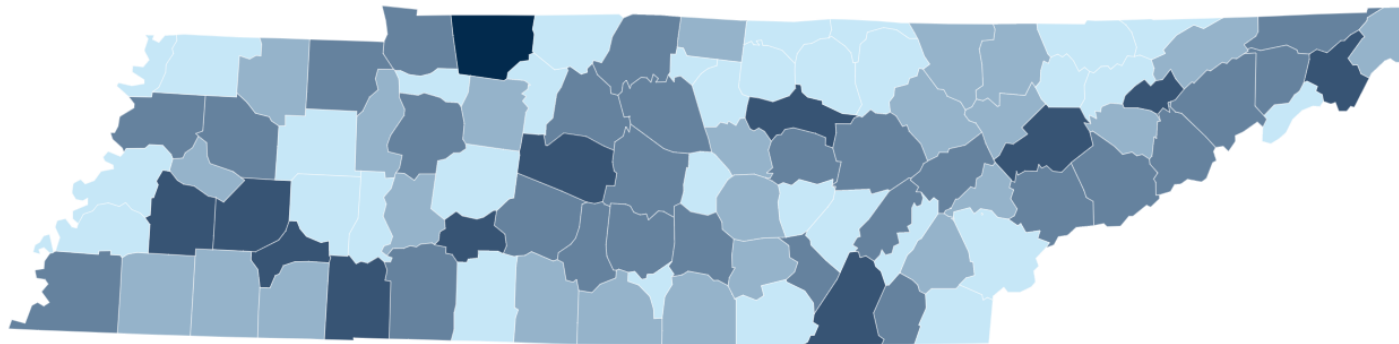
[Back to U.S.](#)

Nonmetro

Metro

All

[Explore other years](#)



4,330,771

Opioid Painkiller
Prescriptions, 2022

20,485

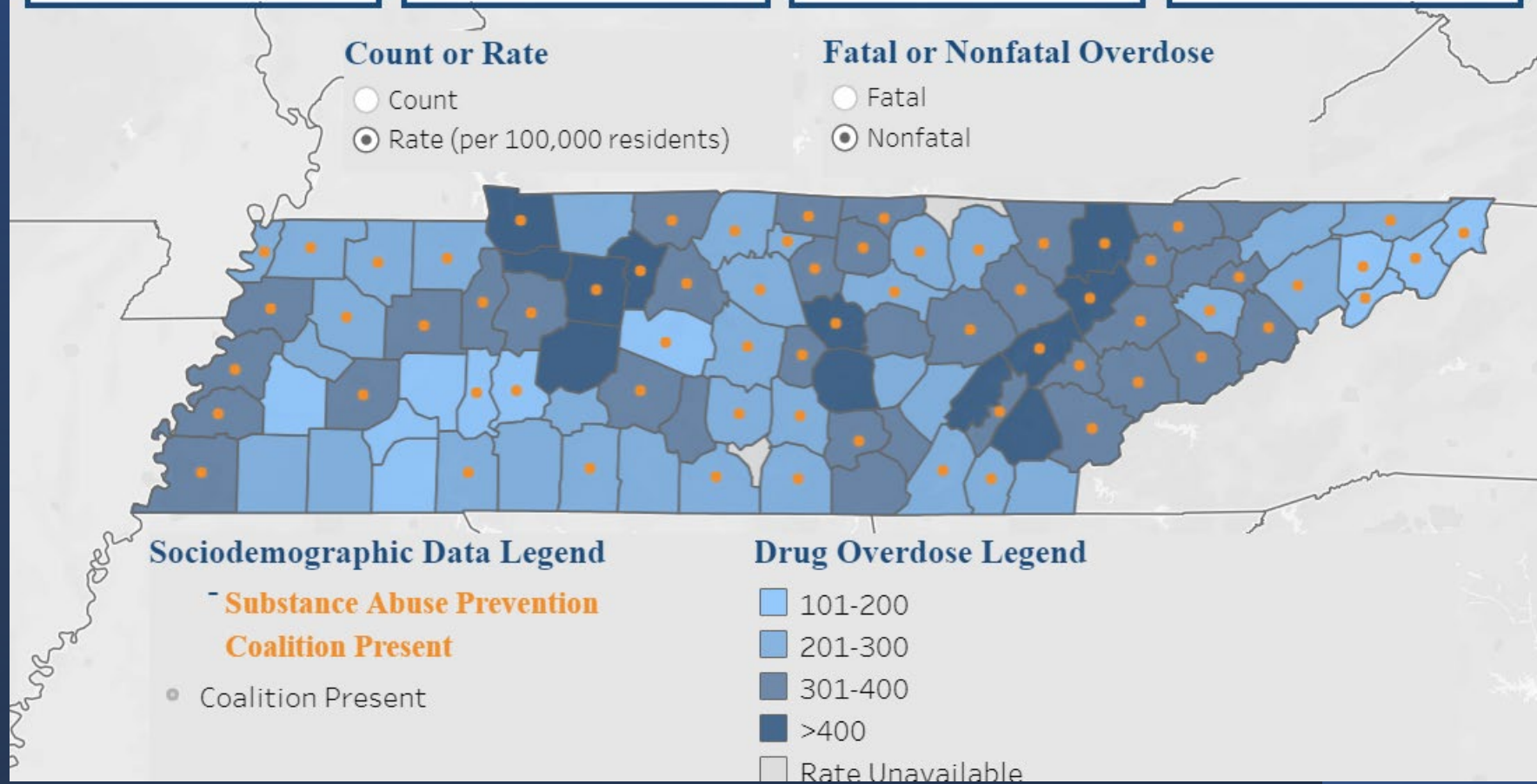
Nonfatal Overdose
Outpatient Visits, 2021

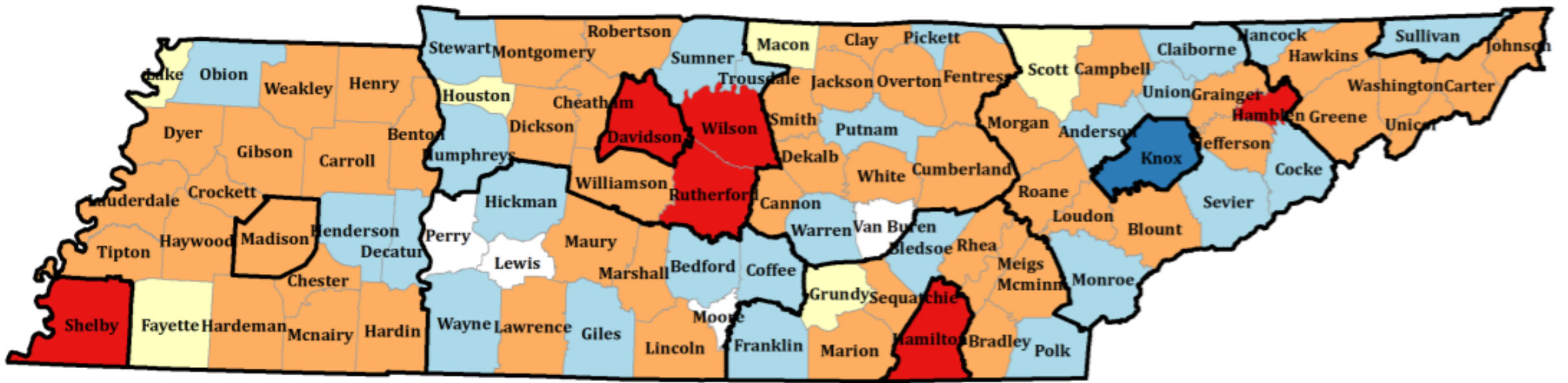
7,008

Nonfatal Overdose
Inpatient Stays, 2021

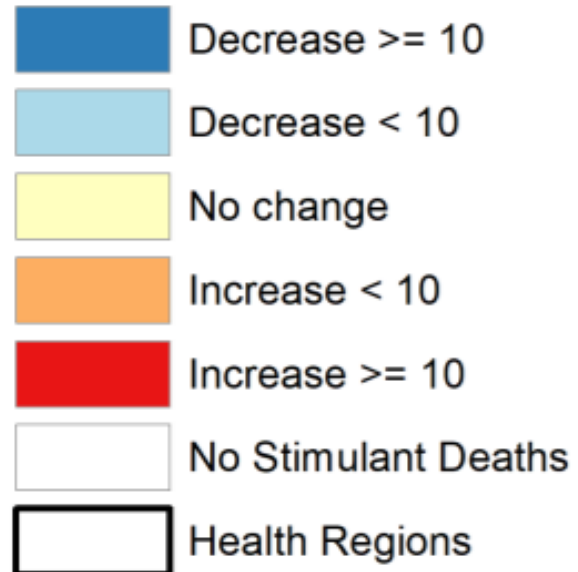
3,814

All Drug Overdose
Deaths, 2021





Change in Stimulant Overdose Deaths by TN County of Residence





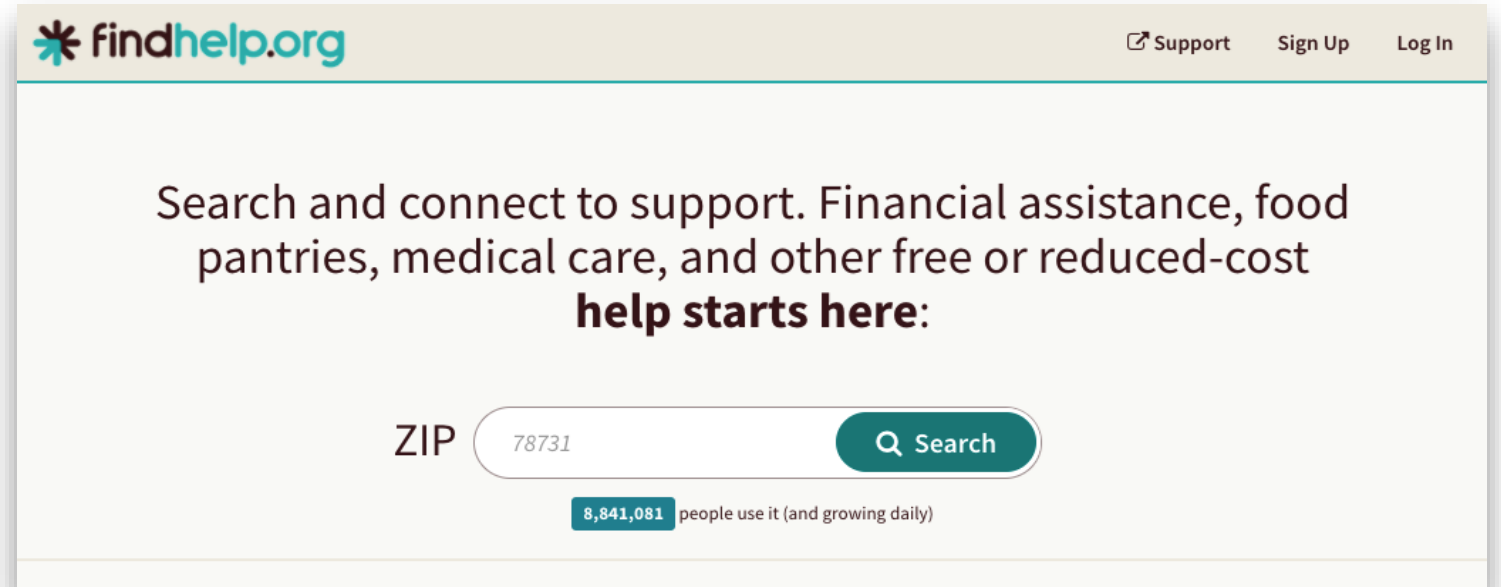
Addressing Social Drivers of Health

Rural Health and Technology





What is findhelp?





“Coordinated action with trusted partners across many sectors is critical as the foundation for long-term health resiliency and prosperity in communities.”

Dr. Kimberly Lamar, TDH Assistant Commissioner for the Division of Health Disparities Elimination.



“Coordinated action with trusted partners across many sectors is critical as the foundation for long-term health resiliency and prosperity in communities.”

Dr. Kimberly Lamar, TDH Assistant Commissioner for the Division of Health Disparities Elimination.

Rural Health

Between 2010-2020, 130 rural hospitals closed and 16 of those were in TN. As of March 2021, 23 counties in TN are without a hospital.

Over 145,000 of our Medicaid Population live in Rural Communities

Primary Needs Identified:

- Transportation insecurity
- Financial insecurity
- Housing instability
- Food insecurity
- Healthcare access
- Substance abuse



SDOH Overview

Economic Stability	Neighborhood and Physical Environment	Education	Food	Community and Social Context	Health Care System
Employment	Housing	Literacy	Hunger	Social integration	Health coverage
Income	Transportation	Language	Access to healthy options	Support systems	Provider availability
Expenses	Safety	Early childhood education		Community engagement	Provider linguistic and cultural competency
Debt	Parks	Vocational training		Discrimination	Quality of care
Medical bills	Playgrounds	Higher education			
Support	Walkability				

Health Outcomes

Mortality, Morbidity, Life Expectancy, Health Care Expenditures, Health Status, Functional Limitations



CBOs: The Backbone of Social Care

Importance of Social Care

Social factors influence
80% of a person's health



Healthy People 2030, U.S. Department of Health and Human Services,
Office of Disease Prevention and Health Promotion.

Role of CBOs

CBOs deliver social care to
our nation's most vulnerable



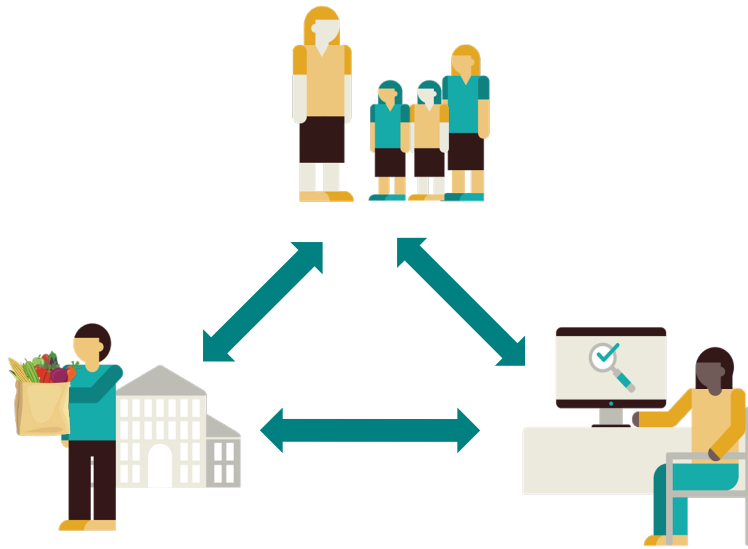
U.S. Social Safety Net

Investing in CBOs is critical
to the future of the U.S.
safety net





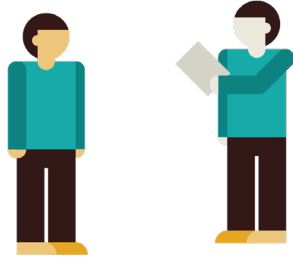
Closing Loops Across Stakeholders



Any party involved in a referral (member, CBO, navigator) may close the loop and track outcomes.

Closed Loop: Any referral with a conclusive status indicating a final update, or the referral is “done”.

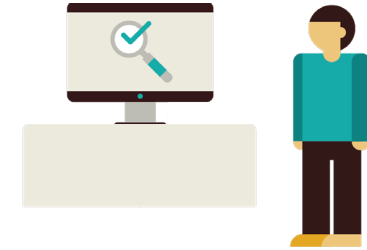
This includes referrals with the following statuses: *eligible*, *referred elsewhere*, *got help*.



Sam Social Worker navigates on behalf of 55 year-old John Member



John has been living with obesity for most of his life, and decided that he wanted to make a change to help him lose weight.



Sam coaches John on using the Community Resource Link and located several organizations that offer weight loss therapy

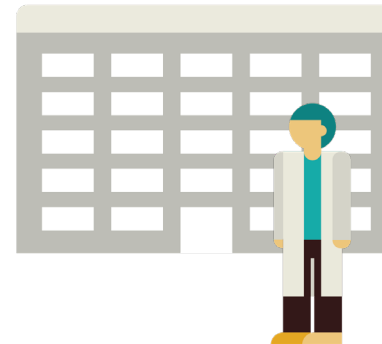


START



Member Journey: *John*

After using the CRL, John has made dramatic progress and is proceeding with medical options to help with his weight loss journey.



John connects with a couple of programs, and ultimately found one that fit his needs.



Privacy and Consent

Per-Referral Consent and Permission-Based Access

- Findhelp uses a “per-referral” consent model.
- We believe organizations should be able to access referrals based on care coordination responsibilities.
- Private referrals should remain private, with the Seeker having the choice to share.





Interoperability

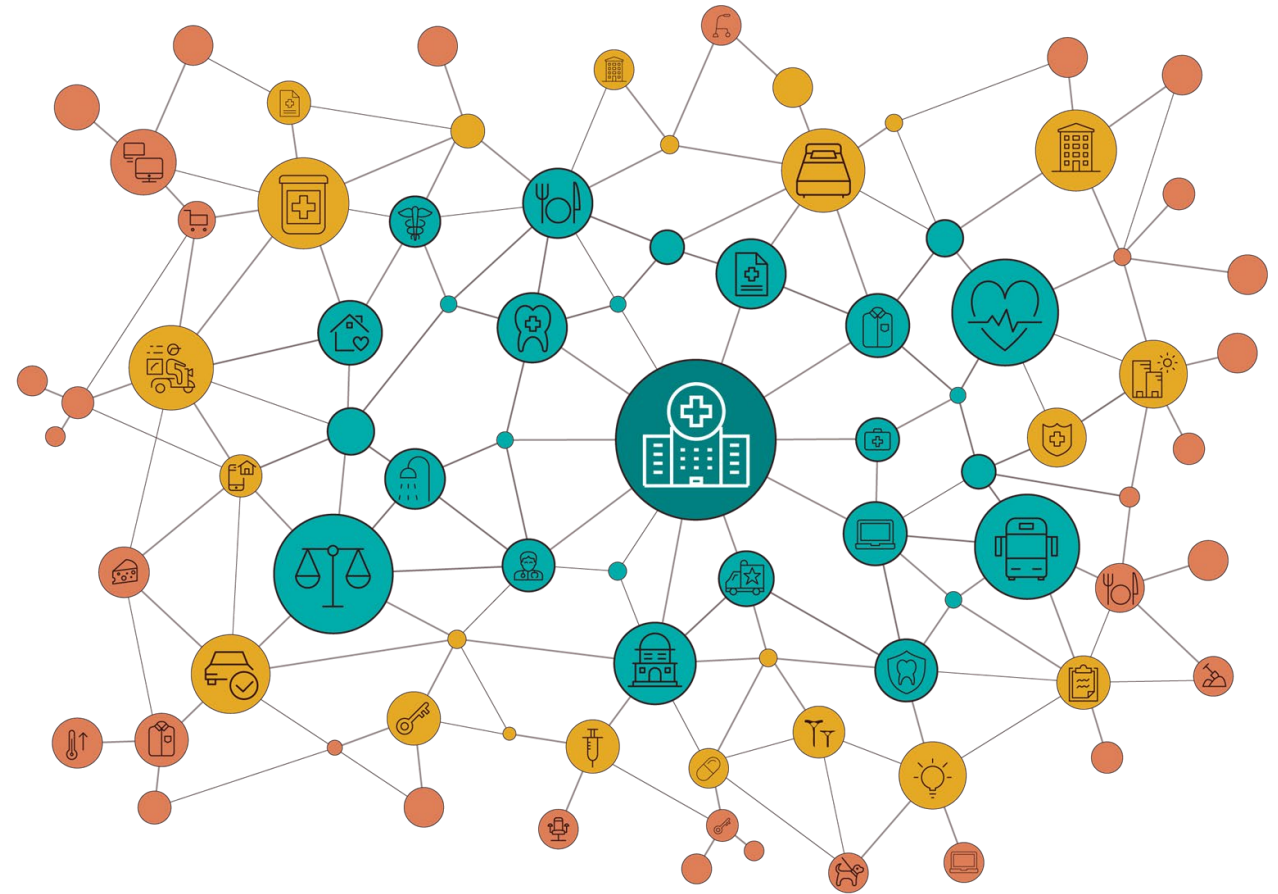
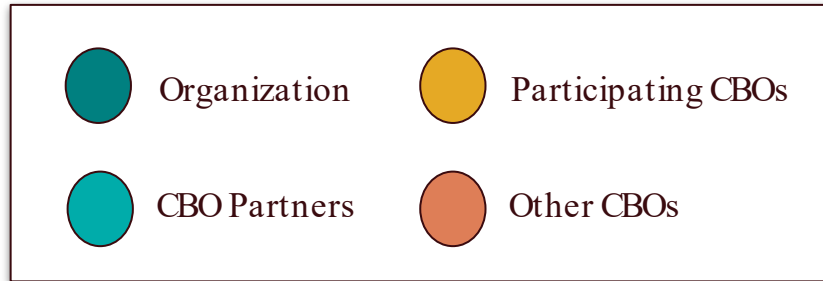
Organization Choice

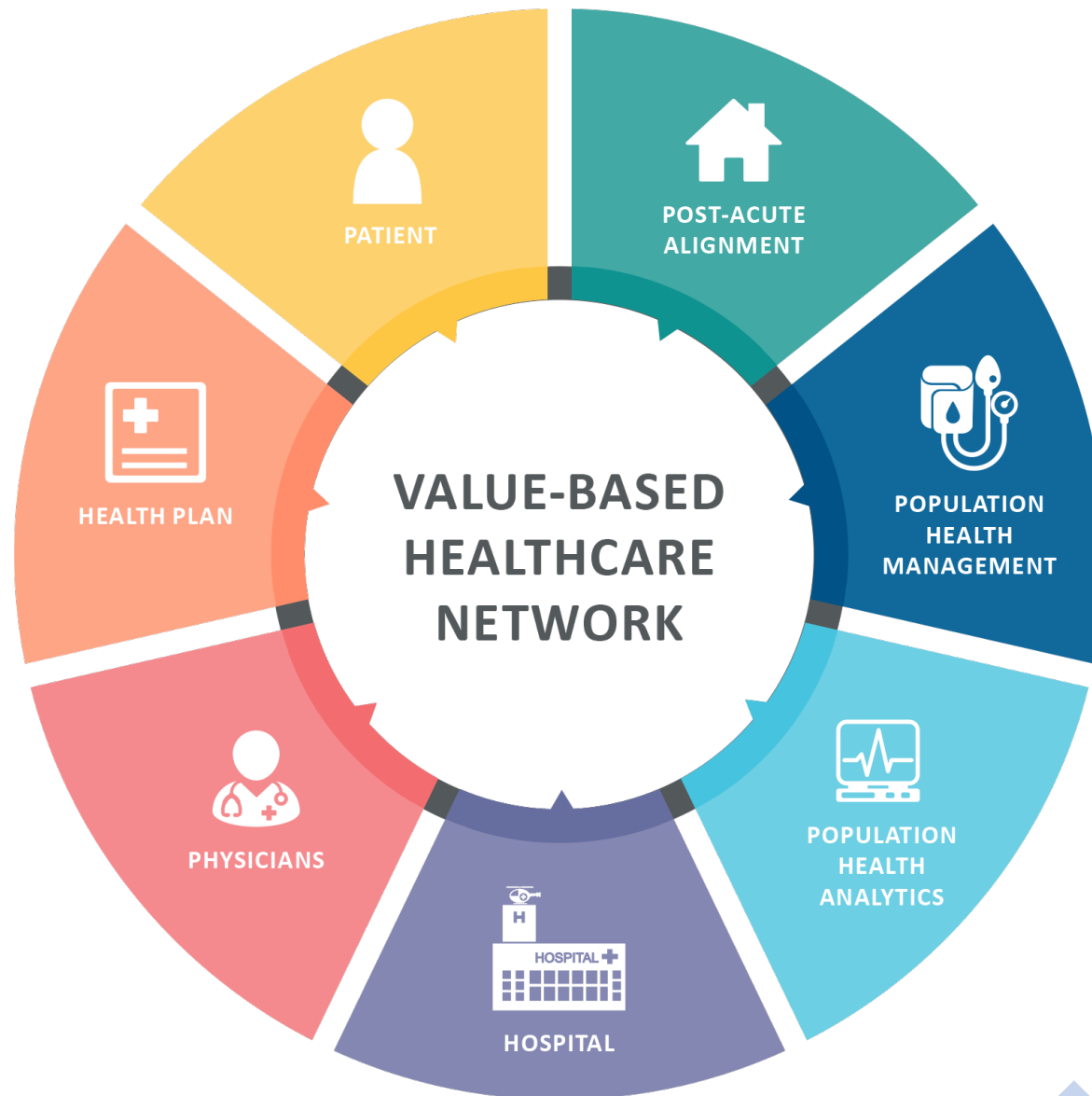
- Organizations should be able to send, receive, and respond to referrals in their chosen system of record.
- When organizations control their own information sharing and data, and we support organizations' ability to make these decisions, we build trust and make it easier to engage.





Trusted Network





*Thank You...
For your Generosity,
Your Commitment, and
Your Persistence.*



**RURAL
HEALTH**
ASSOCIATION OF TENNESSEE

www.tnruralhealth.org